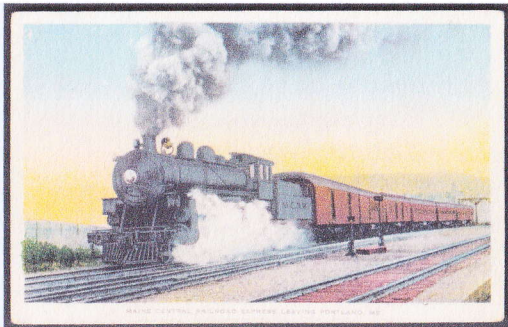
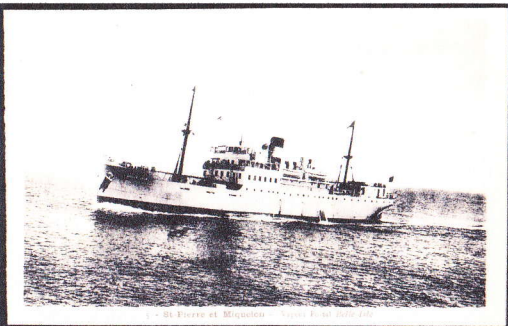


United States 1928-1960 mail for St. Pierre & Miquelon via The Gull Fast Train through Maritime Canada

1. The Routes Boston to St. Pierre & Miquelon via The Gull Train & the SS Belle Isle



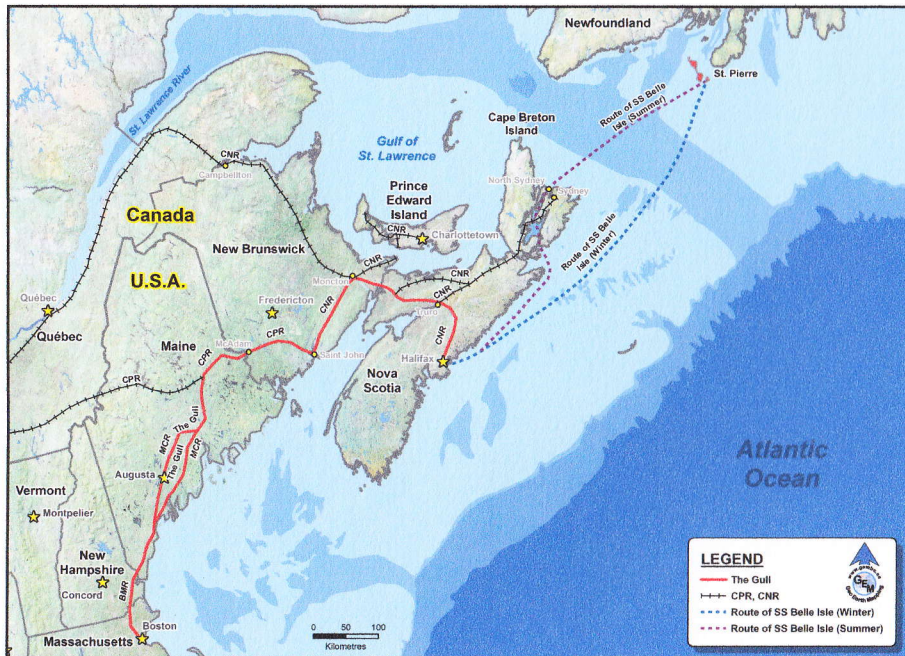
The Gull Express under steam on the leg run by the Maine Central Railway (MCR).



SS Belle Isle of the Newfoundland Canada Steamships at sea near the French Islands of St. Pierre & Miquelon. The company held a mail contract with the Island's French Colonial Post Office. Belle Isle routes are dashed on the map.

Exhibit Plan

1. The Routes Boston to St. Pierre & Miquelon via *The Gull* & *SS Belle Isle*
2. Examples of United States mail sent to St. Pierre in sealed bags
3. Way bills *The Gull* via Halifax connecting with *SS Belle Isle*
4. Way bills *The Gull* via North Sydney connecting with *SS Belle Isle*
5. Return of way bills to Boston from the St. Pierre Post Office



Map of the Atlantic Coast of New England, Maritime Canada and southern Newfoundland shows the routes of rail and sea transport from Boston to St. Pierre [© used with permission].
Route of The Gull Express Train (red lines) : Boston & Maine Railway (BMR); Maine Central Railway (MCR)
 Canadian Pacific Railway (CPR); Canadian National Railway (CNR)
Route of the steamship service (dashed lines) : Newfoundland Canada Steamships—SS Belle Isle