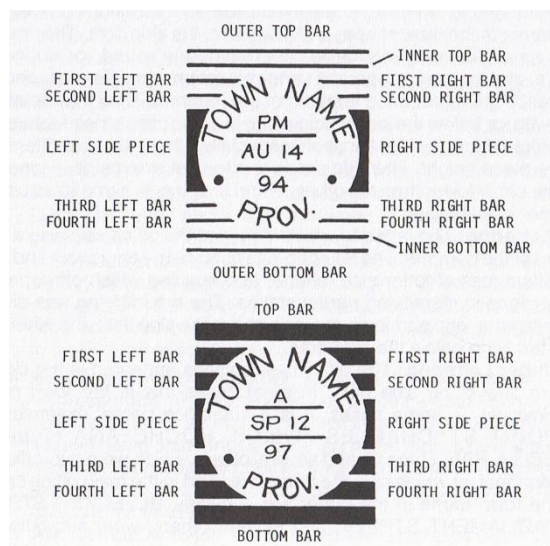
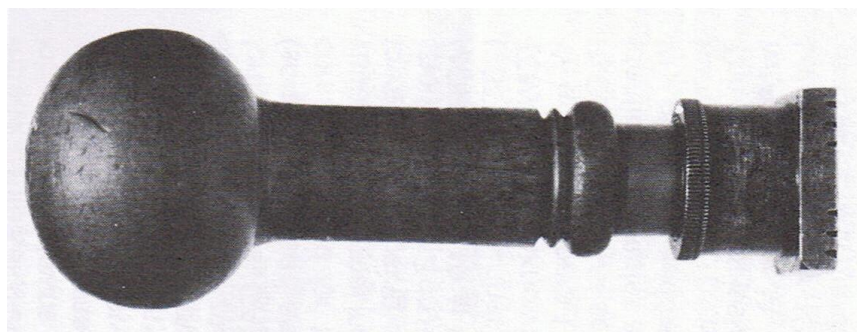


Squared Circles of New Brunswick

The “Squared Circle” canceling devices were first used in 1893 when these hammers were brought into use in over 300 towns and cities in Canada. There were two types of Squared Circles, mainly characterized by narrow or wide bars.



The Squared Circle hammers were in popular use during the late Victorian period, though a few towns continued to use the devices through the Edwardian, and George V periods with the odd straggling use showing up into the late 40”s and early 50”s.



*Diagram and Picture from “The Squared Circle Postmarks of Canada”
– Moffett and Hansen 1981.

In addition to the ultimate goal of acquiring one impression from each hammer, this exhibit considers the time marks and other indicia as well as the collection of dates, geographical areas and the collection on specific stamps as well as covers. This collection addresses the Squared Circles of New Brunswick only. There are 16 different hammers, all Type II Including the 3 St. John Hammers. (14 towns)