

THE FALL OF THE TWIN TOWERS

This exhibit uses philatelic material, postcards, and mail-artist covers to illustrate the rise and fall of the Twin Towers of New York City, destroyed by terrorist attack on September 11, 2001.

PLAN OF THE EXHIBIT

- 1] Before the fall
- 2] The fall
- 3] Patriotic covers

- 4] Memorials
- 5] Legacies



1.1 - BEFORE THE FALL

Manhattan, pre-1966 before construction of the Twin Towers began. Postcard is a Pan-Am Airlines publicity card. East River in foreground, Hudson River on far side of island.



Postcard looking south to the Twin Towers. No date on postcard but probably 1969 because the North Tower (closest to camera) was completed in 1970.



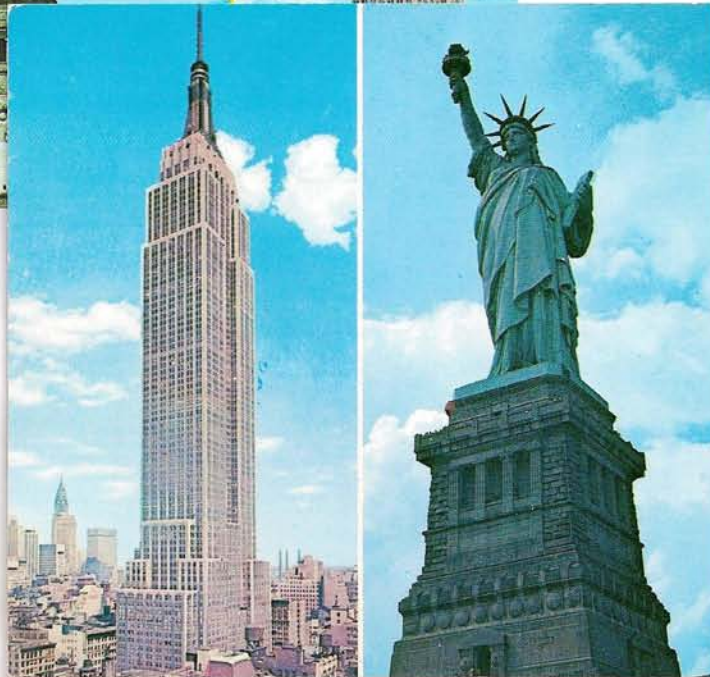
1.2 - BEFORE THE FALL

*Greetings
from*

NEW YORK CITY

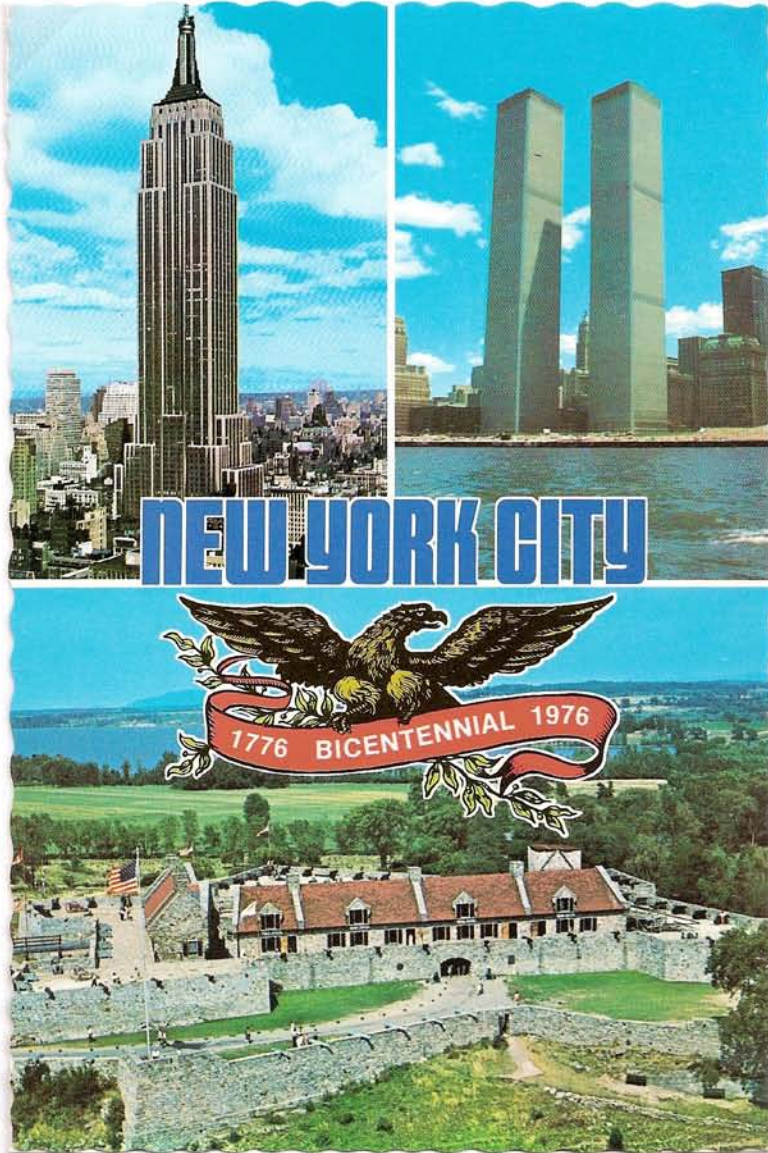
Tower 1 (North Tower) was completed in 1970. Tower 2 (South Tower) was finished in 1972. Each tower was 110 stories, about 405 metres tall.

The image on the two triptych postcards is circa 1972, just before main construction was completed on Tower 2. The top floor of Tower 2 was not yet completed.



The bottom card shows the Statue of Liberty in relation to the Twin Towers. It also shows the Battery Park City landfill site adjacent to the Twin Towers, upon which other skyscrapers were completed just before 9/11.

1.3 - BEFORE THE FALL



The Twin Towers were unlike all other skyscrapers, which are built with a concrete central core supporting a cage structure of beams enclosed by non-bearing curtain walls.

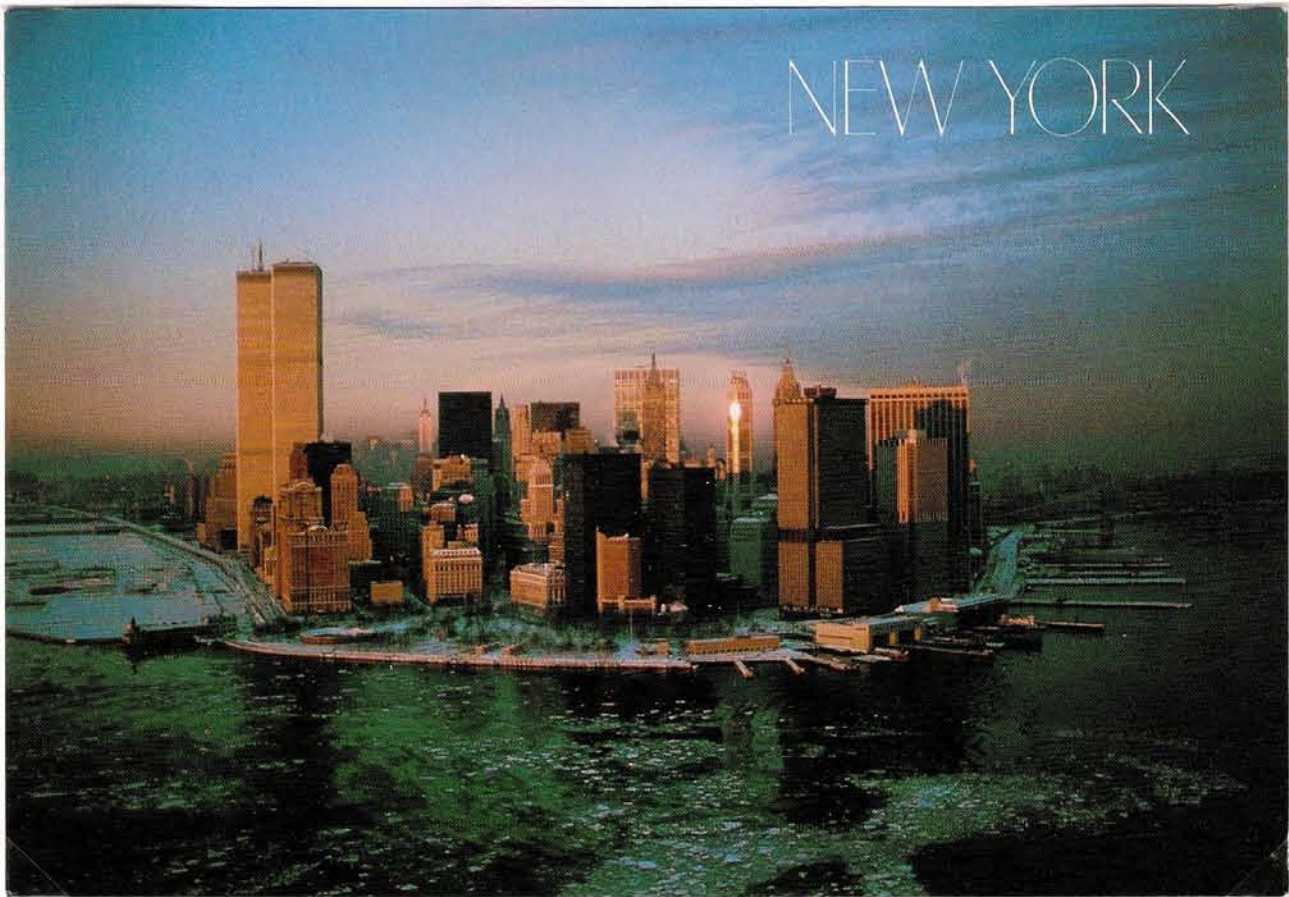
The Twin Towers had load-bearing walls around the outside, and concrete floors suspended from them by beams and cables. Outside walls were concrete columns with narrow windows. This maximized open floor space without support columns blocking layout of offices. When fires from aircraft jet fuel melted the support beams, the floors fell and pancaked down.

The Empire State Building (upper left of postcard) was built with a traditional concrete core and steel framework hanging off it. During World War Two, a heavy bomber got lost in fog and slammed into the tower. There were casualties and extensive damage but that skyscraper did not collapse because the core supported the building.

1.4 - BEFORE THE FALL

The postcard view below looks north. It dates to early 1980s because the television mast on top of the North Tower was installed in 1978, but the Battery Park City landfill construction had not yet begun.

The other two postcards show the Battery Park skyscrapers after completion. They are the smaller towers (on the left on each postcard) with the dome and pyramid roofs. When the Twin Towers fell, the roofs were smashed in and the sides facing the Towers heavily damaged.



1.5 - BEFORE THE FALL

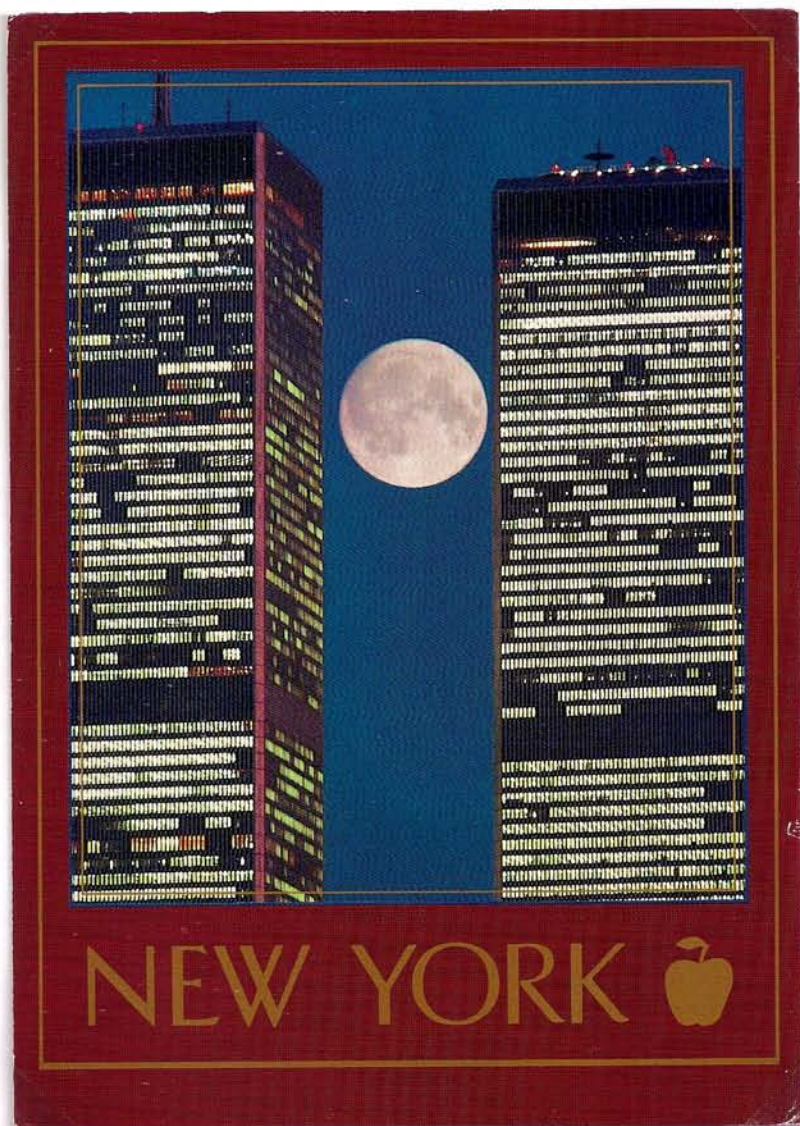
Notice the vertical concrete columns in these postcard views. These were the load-bearing part of the buildings, with the floors slung from them. The Twin Towers were basically square tubes.



The Twin Towers were a major tourist attraction. Millions of postcards depicting them were mailed back home by visitors.

1.6 - BEFORE THE FALL

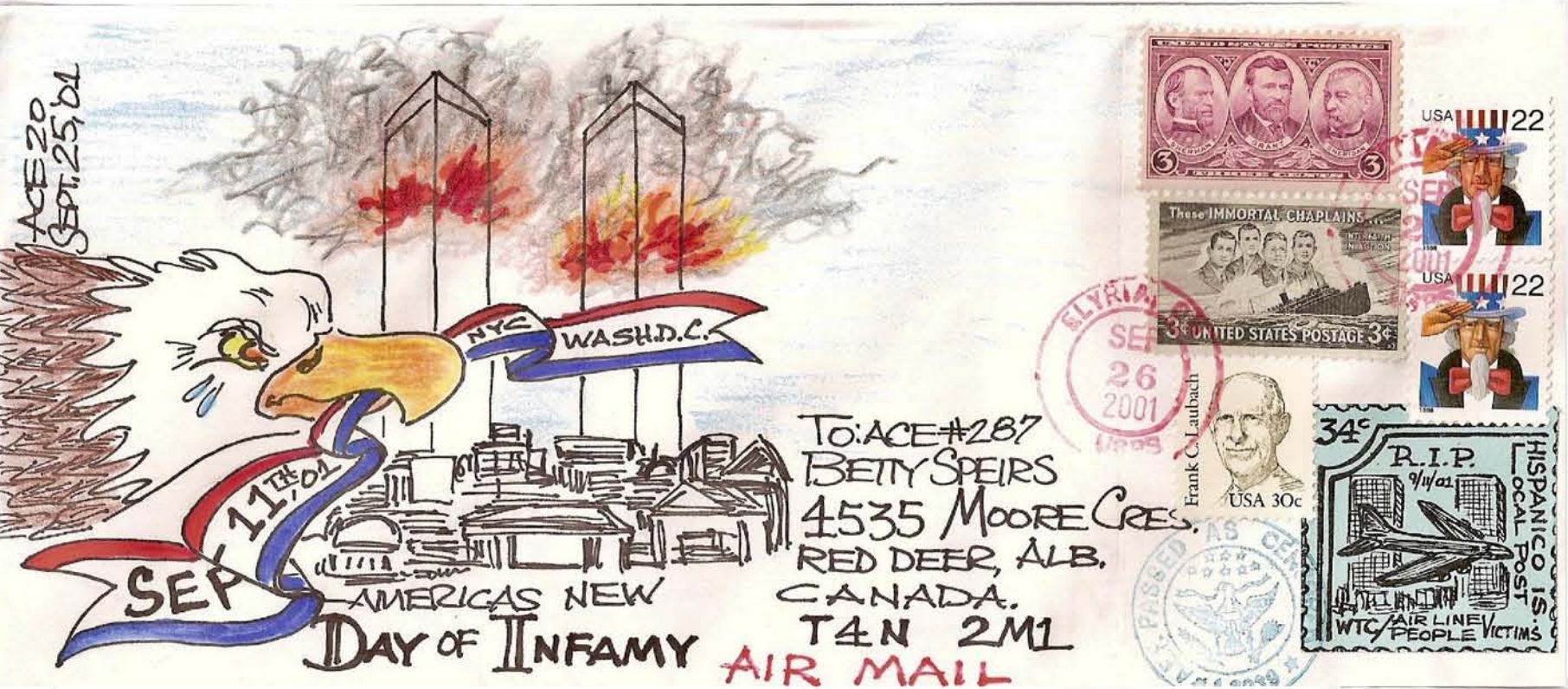
Tower 1 (North Tower) has television aerial on it, installed 1978. Notice the narrow windows of both towers, because of the outside columns of the load-bearing walls.



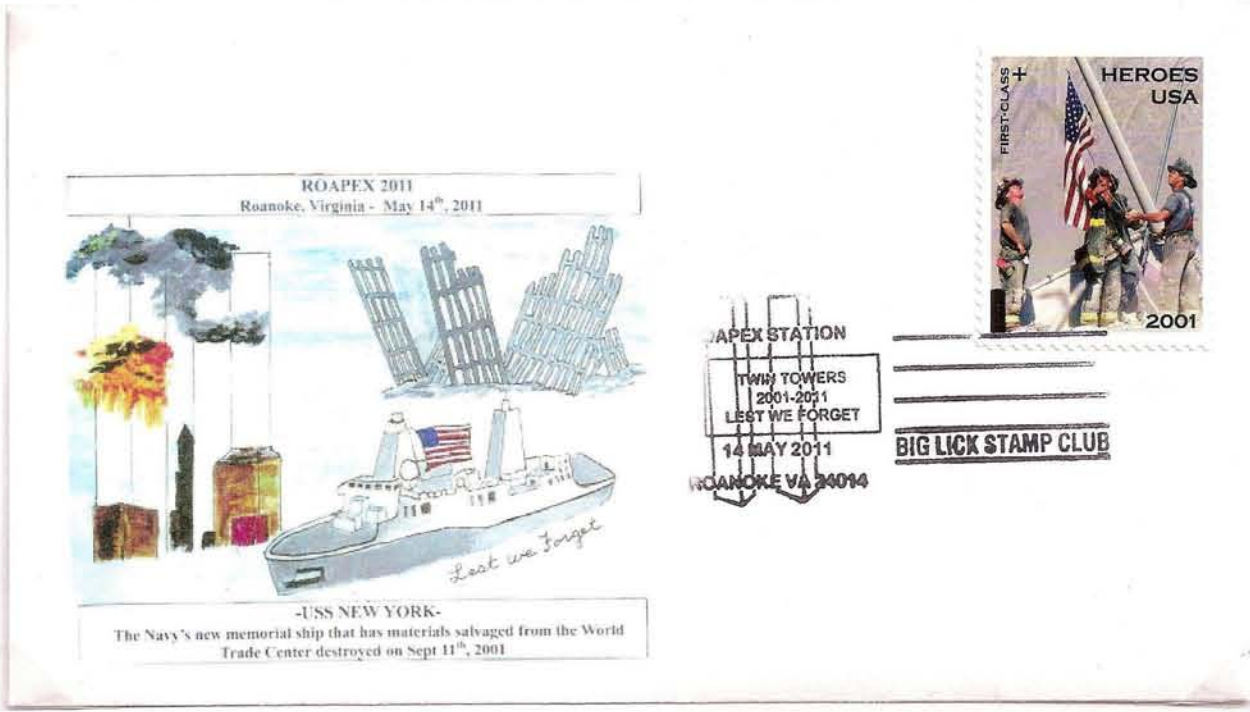
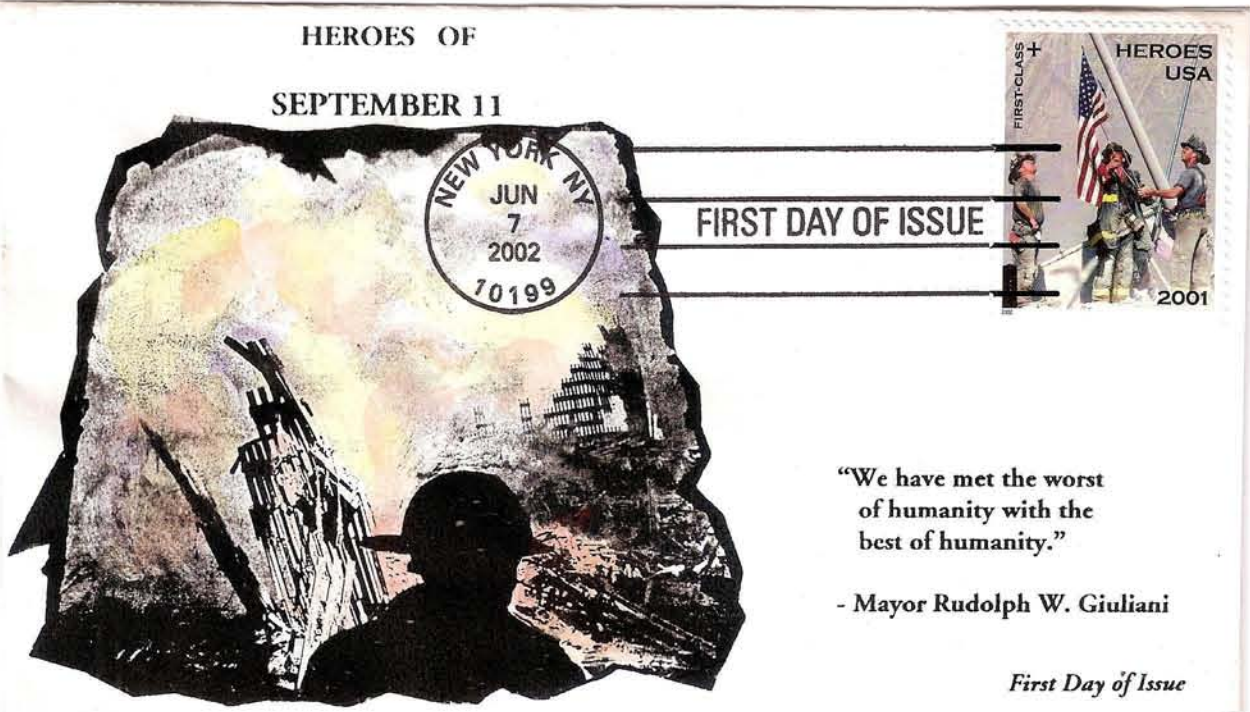
An ominous foreboding. This 1990 Bulgarian sheetlet was a routine topical stamp set until the fall of the Twin Towers. The lower right stamp shows a passenger jet flying past the Twin Towers.

2.1 - THE FALL

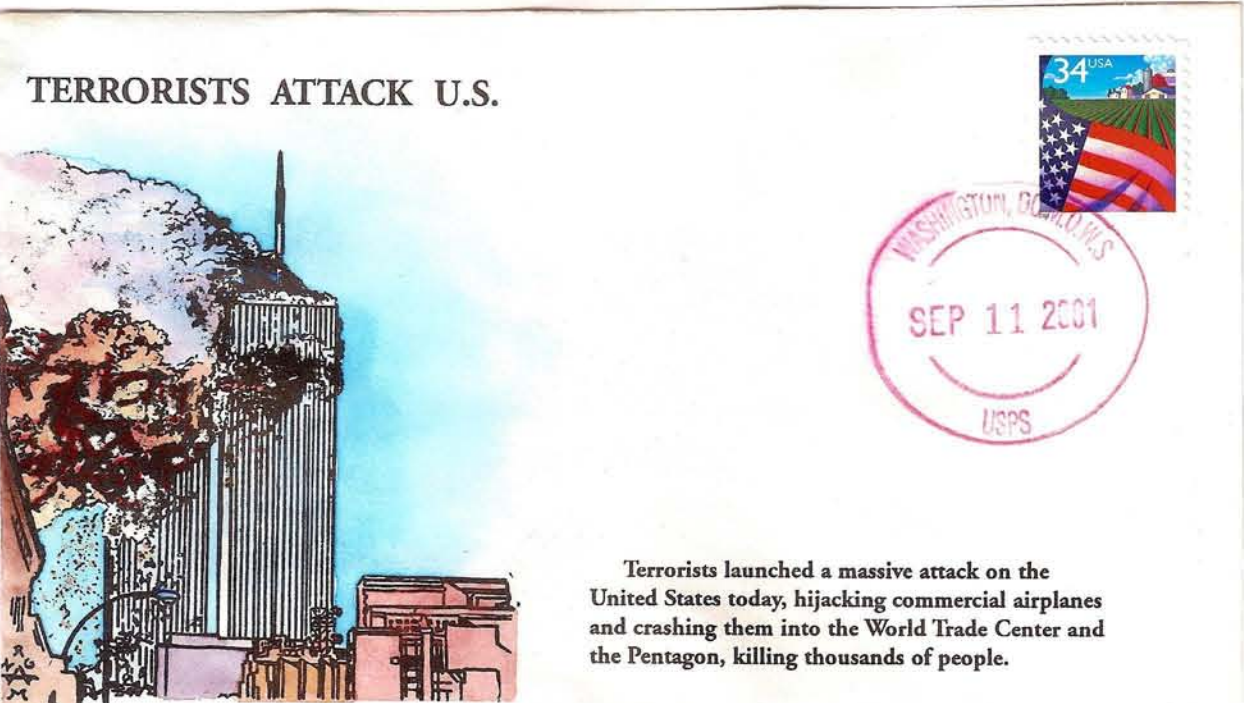
Patriotic cover dated 2001-09-26. Notice the homemade cinderella at lower right showing the passenger jet.



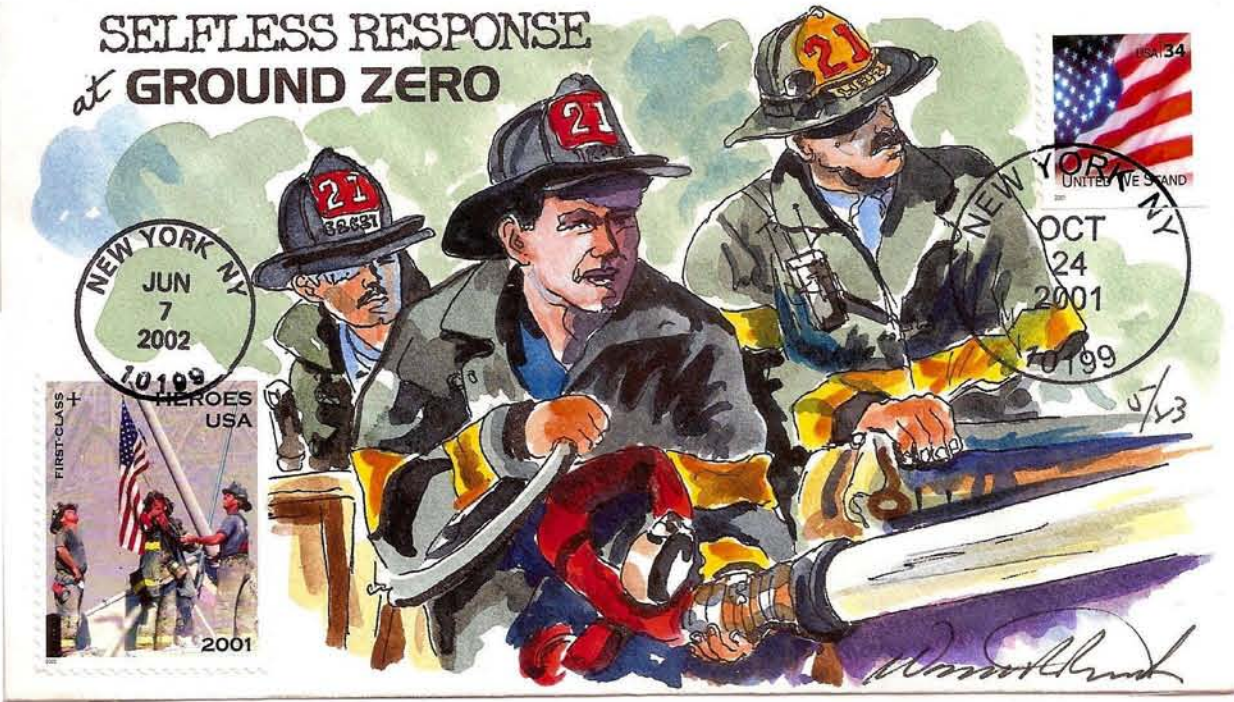
The cachets on the other three covers show the stages of the fires and collapse.



The unknown philatelist who prepared the cover below dated the same day as the attack must have rushed to the post office that afternoon and postmarked blank envelopes. The cachet was applied later.



The firefighters responding to the Twin Towers call little knew what their fate would be. These covers are dual first-day covers with an October 24, 2001, cancel for the United We Stand stamp and June 7, 2002, for the Heroes stamp.



2.2 - THE FALL

The Church Street post office was located on the northwest corner of the World Trade Center complex. When the Twin Towers fell, some airplane and tower debris landed on the roof of the Church Street post office. All the windows were blown in by the concussion, and the floors filled knee-high with asbestos, ground-up human remains, concrete dust, and steel fragments. It did not re-open until August 2004.

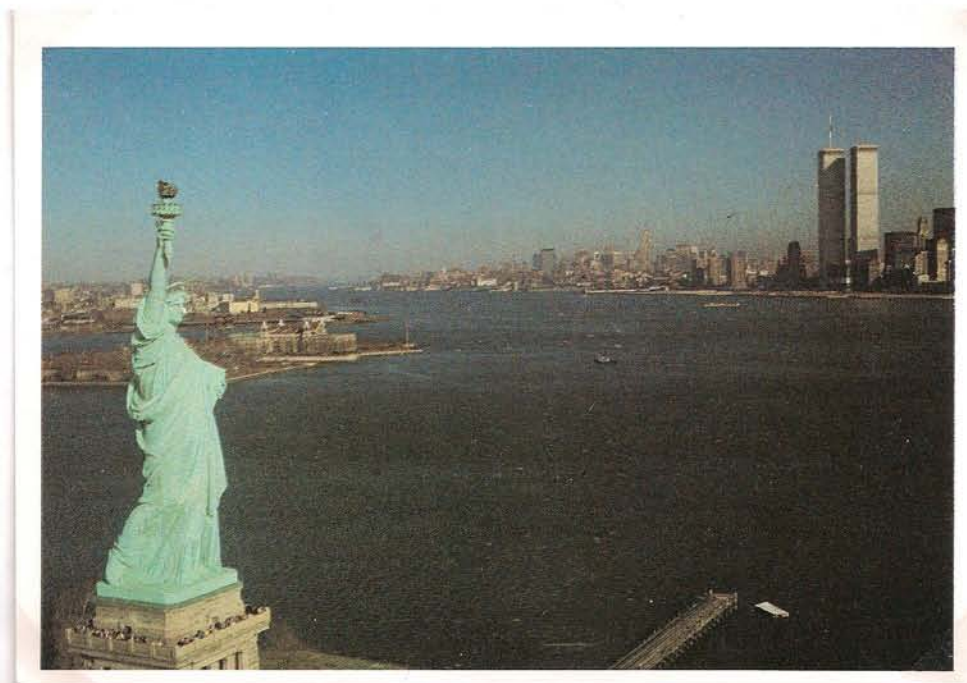


The commercial cover below is dated September 13 with a return address of Tower One. It was actually used from an emergency back-up centre in Albany that hadn't yet had time to print new letterheads. Ordinarily this letter would have gone through the Church Street station but instead it went through a station elsewhere on Manhattan.



2.3 - THE FALL

Two planes attacked the Twin Towers, one hit the Pentagon, and another was on its way to the White House when it crashed at Shanksville, Pennsylvania. The Statue of Liberty was targeted by a fifth group of terrorists but their plane never took off because the Federal Aviation Authority had shut down all air travel due to the previous four hijackings. The postcard shows the relationship of the Statue of Liberty to the Twin Towers. The postcard is circa 1980s since Tower 1 has television aerial.



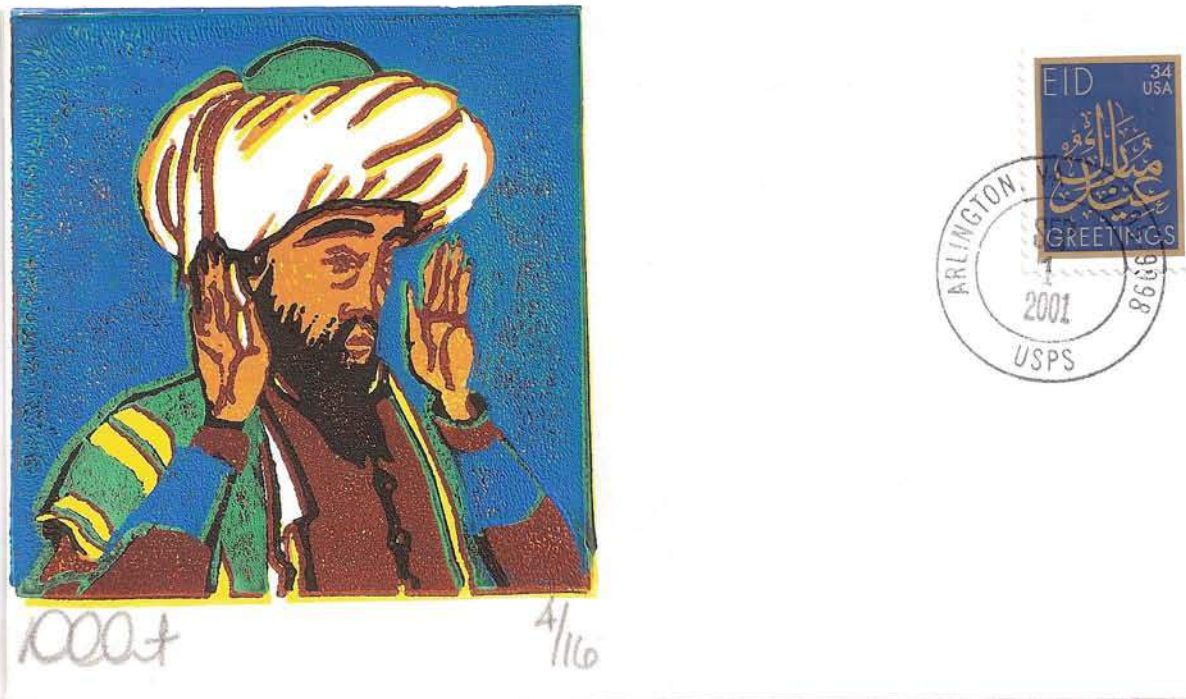
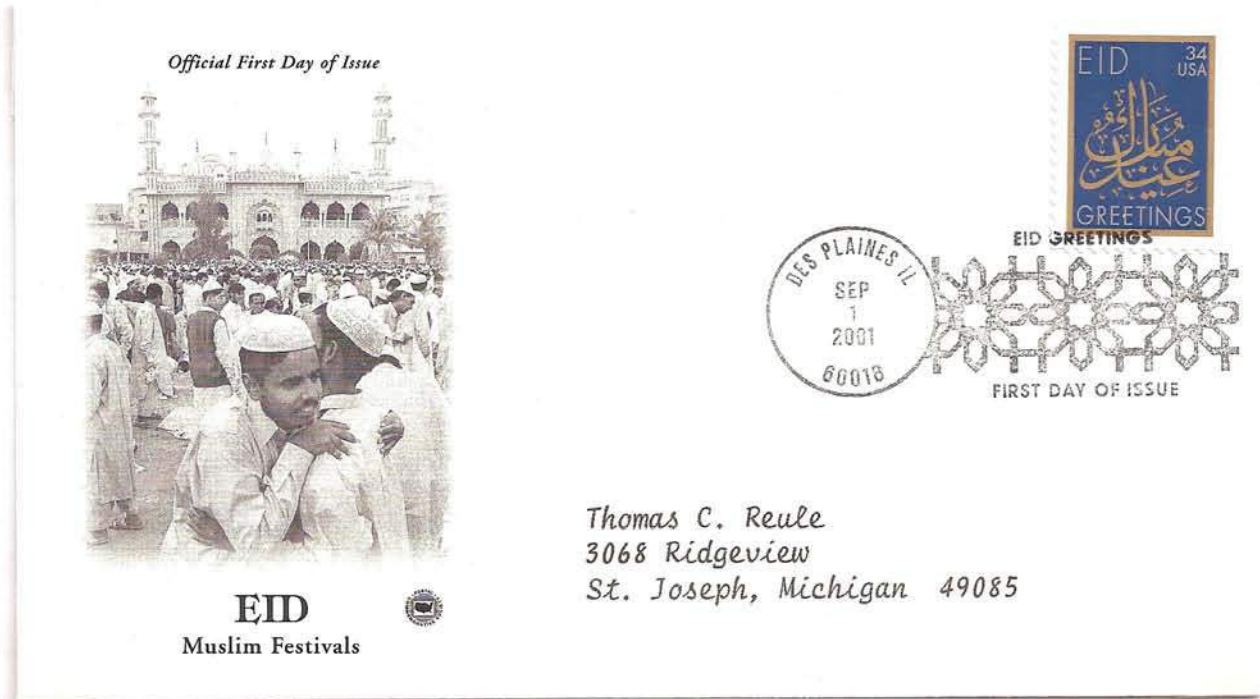
A.C.E. # 287
Betty Davis
4535 Moore Crescent
Red Deer, Alberta
Canada T4N 2M1

PAID 1.25



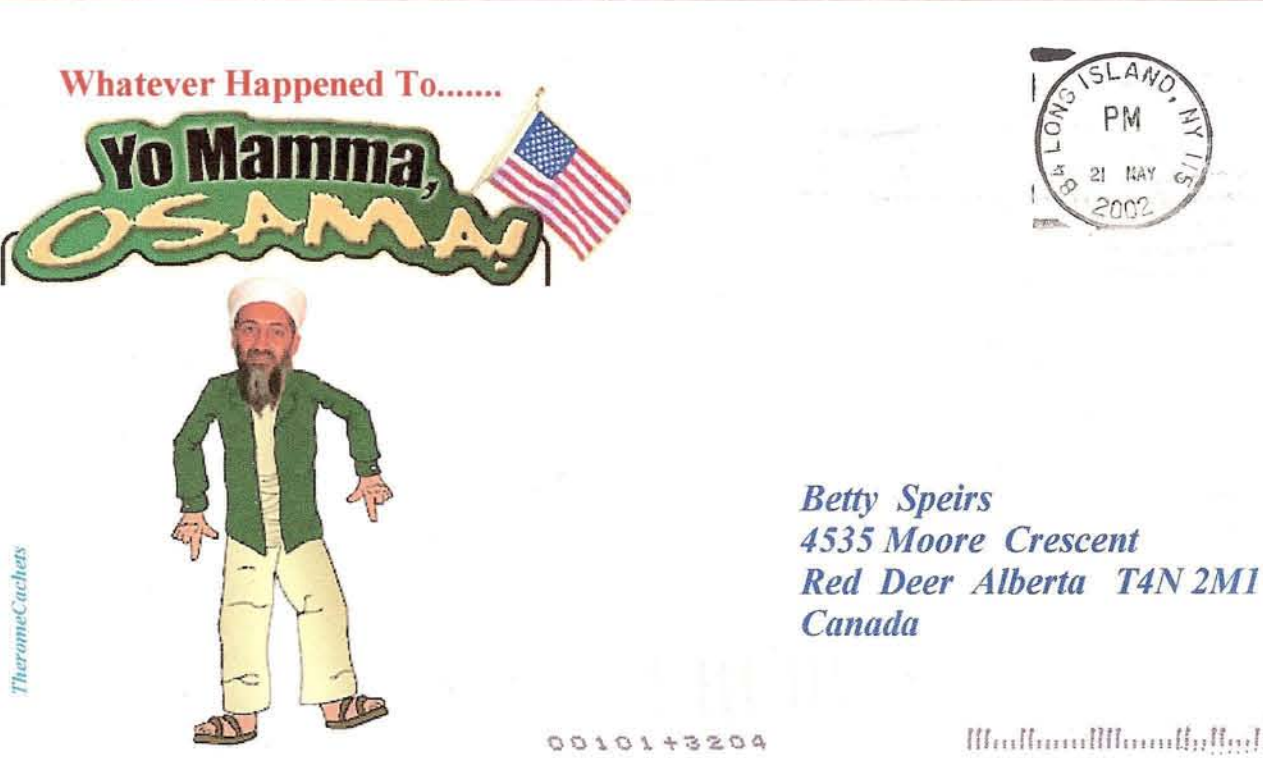
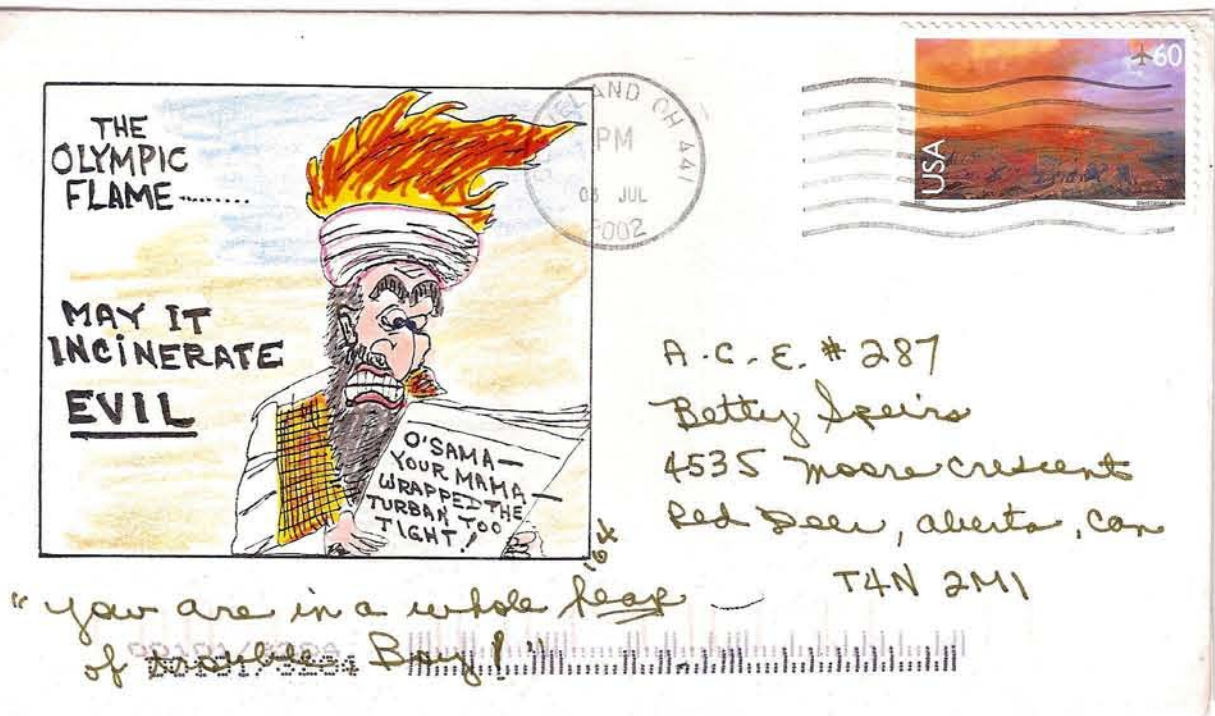
2.4 - THE FALL

Bad timing! USPS released a 34-cent stamp for the Islamic festival Eid on September 1, 2001. It was kept underneath the counter after the 9/11 attacks and supplied only on request.



3.1 - PATRIOTIC COVERS

Emotions ran high among mail artists in the immediate aftermath of the attacks. The patriotic cover at right blames Saddam Hussein and Moammar Gaddafi for the 9/11 attacks, but not only did they have nothing to do with it, they were active enemies of Al Qaeda. The man on the left is Osama bin Laden, head of the organization.



2001 was the 60th anniversary of Pearl Harbor. This cover is postmarked December 7th, on the anniversary of that attack, and ties it in with 9/11.

3.2 - PATRIOTIC COVERS



4.1 - MEMORIALS

Cover dated 2001-10-24, which was the first day of issue for the United We Stand stamp, rushed into print by the USPS.



The U.S. Congress ordered the USPS to issue a semi-postal stamp (“Heroes USA”), with the surcharge in aid of dependents of first responders who died when the Twin Towers fell.



4.2 - MEMORIALS

The USPS issued a sheet of Greetings From America stamps in April 2002. Because of the complexity of the designs, requiring considerable fact-checking and detailed design elements, the stamp designs had to be completed by August 2001 for a 2002 release. The New York design originally showed the Twin Towers. After considerable debate, the Postmaster-General, who was a New Yorker, ordered that the towers be removed from the final design.



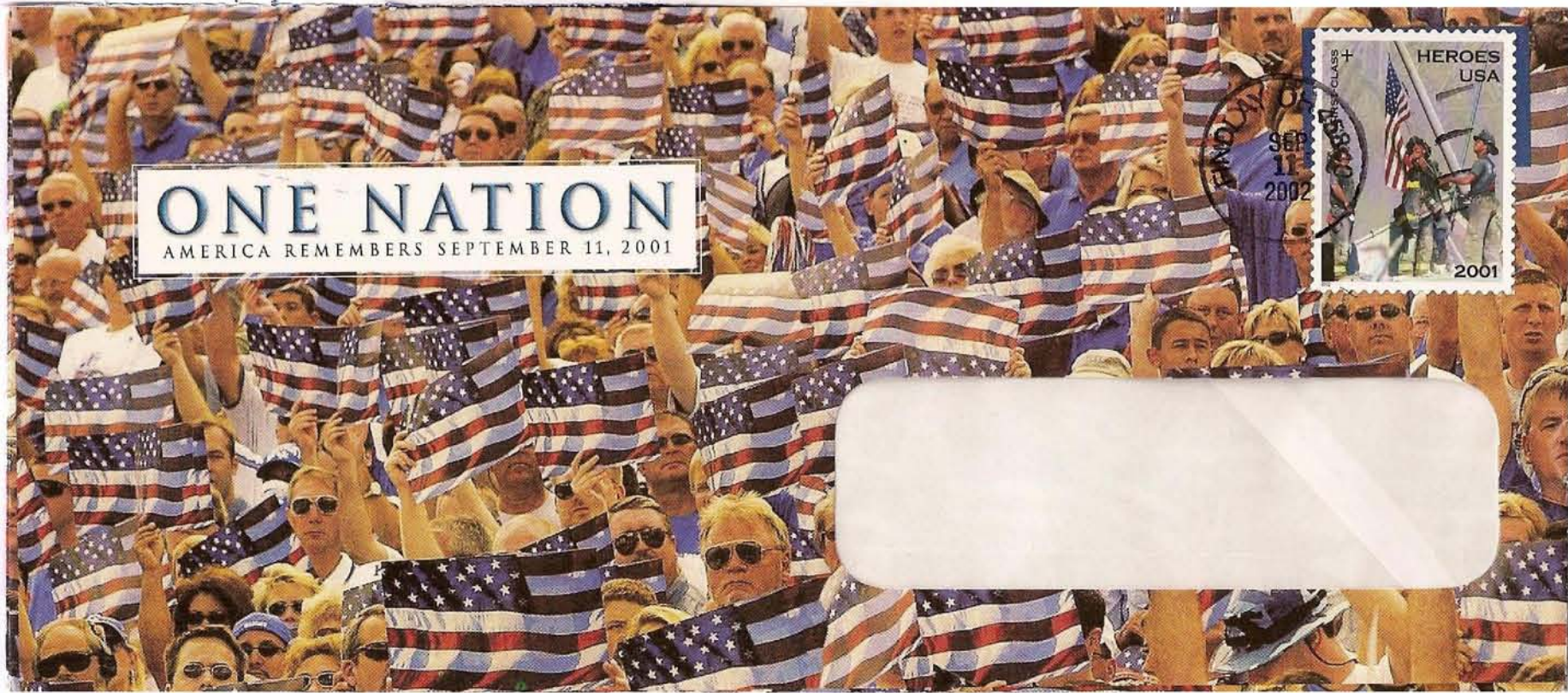
Original design, never printed or issued, showing Twin Towers in upper right corner of stamp.



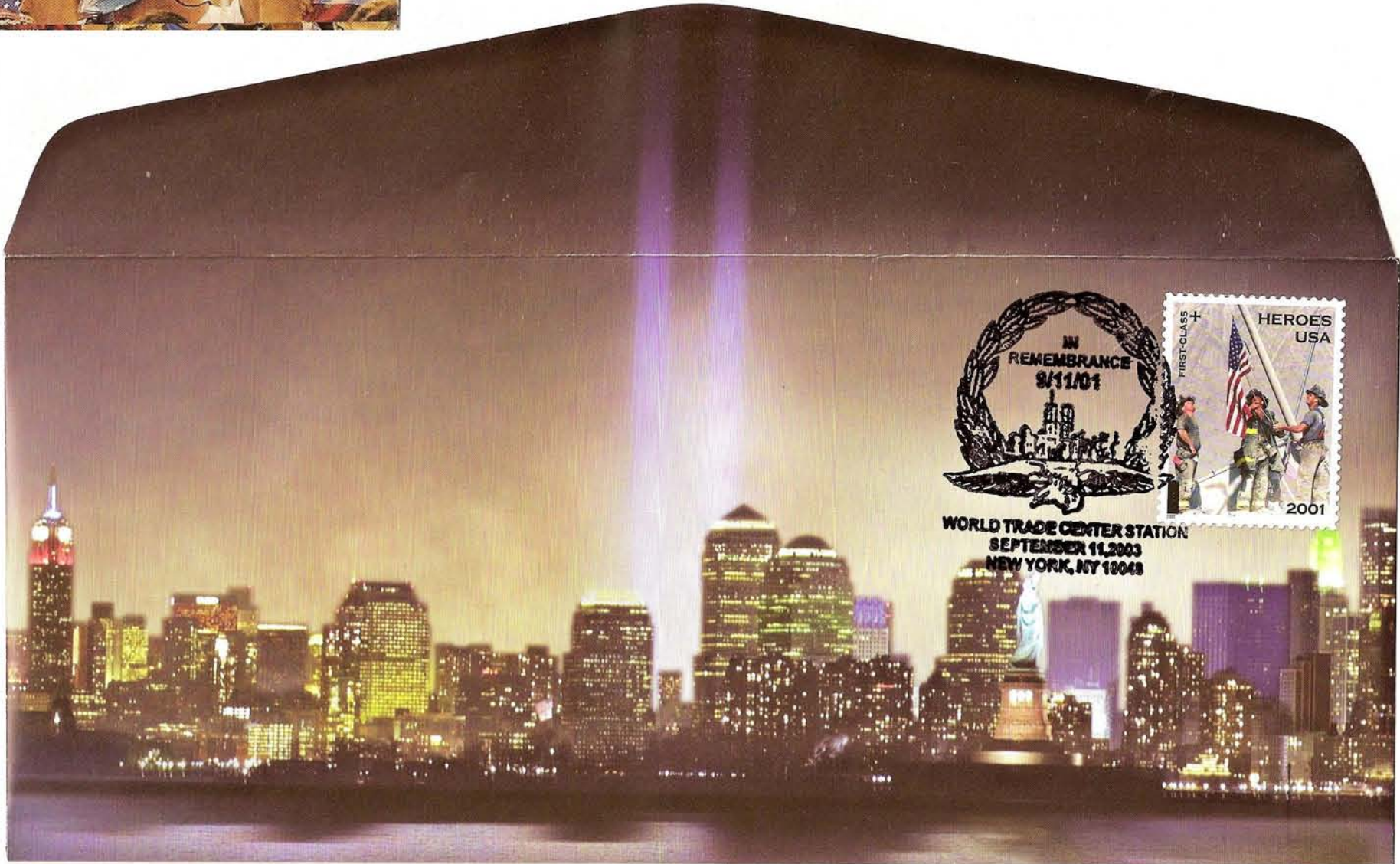
Dale Speirs
Box 6830
Calgary, Alberta
Canada
T2P 2E7

Issued stamp, with Twin Towers deleted.

4.3 - MEMORIALS



Above: Heroes stamp on cover dated September 11, 2002.



Below: Heroes stamp on special cover issued September 11, 2003, by USPS. Searchlights were placed around the perimeters of where the Twin Towers once stood and aimed vertically into the night sky to create towers of light.

4.4 - MEMORIALS

Israel, as a long-time ally of the USA who had also received many attacks, issued stamps in 2003 and 2010.



Issued 2003, showing a beam from one of the fallen towers.



Issued 2010, showing memorial in Jerusalem.



Commercially used issue of 2003.

4.5 - MEMORIALS



Two early memorials of 2001. The sheet of artistamps was issued in December 2001 by a consortium of mail artists known as International Art Post, based in Canada.

The top centre artistamp has a design error; the Twin Towers were not lined up with each other but were offset so that all tenants had a skyline view.



4.6 - MEMORIALS

Subsequent-year memorial postmarks.



WORLD HEALING & COMPASSION ADDRESS

SEPTEMBER
11
2005



HAILEY, IDAHO 83333

WORLD HEALING & COMPASSION ADDRESS
STATION

SEPTEMBER
11
2005

HAILEY, IDAHO 83333

Dale Speirs
Box 6830
Calgary, Alberta
Canada
T2P 2E7

Dale Speirs
Box 6830
Calgary, Alberta
Canada T2P 2E7

Skyline of lower N.Y. & Battery Park

OLD GLORY STATION, NEW YORK, NY
SEP
11
2006
70001



FIREMEN RAISE FLAG AT WTC • 2001

4.7 - MEMORIALS

Postmarks honouring those killed when the fourth plane crashed near Shanksville, Pennsylvania, before the terrorists could reach their target, the White House. The passengers found out what was happening by cellphones and rushed the hijackers, who then power-dived the plane into the ground.



SEPTEMBER 11, 2006
FIFTH ANNIVERSARY
BOULEVARD OF HEROES
NEVER FORGET
FLIGHT 93
AMERICAN HEROES



SEPTEMBER 11, 2007
SIXTH ANNIVERSARY
BOULEVARD OF HEROES
NEVER FORGET
FLIGHT 93
AMERICAN HEROES



P222



FLIGHT 93 NATIONAL MEMORIAL
STATION SHANKSVILLE, PA 15560
SEPTEMBER 11, 2016
15th ANNIVERSARY



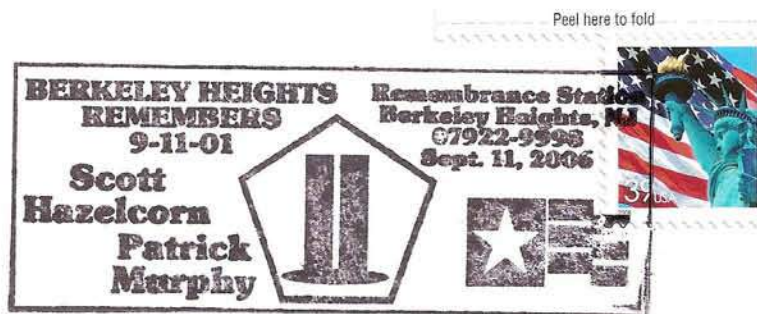
LE SPEIRS
PO BOX 6830 STN D
CALGARY ALBERTA
T2P 2E7



DALE SPEIRS
PO BOX 6830 STN D
CALGARY ALBERTA
T2P 2E7

4.8 - MEMORIALS

Fifth anniversary cover. The Berkeley Heights, New Jersey, postmark honours two of its citizens who died in the attacks. Hazelcorn was a broker in one of the towers and Murphy was on duty at the Pentagon.

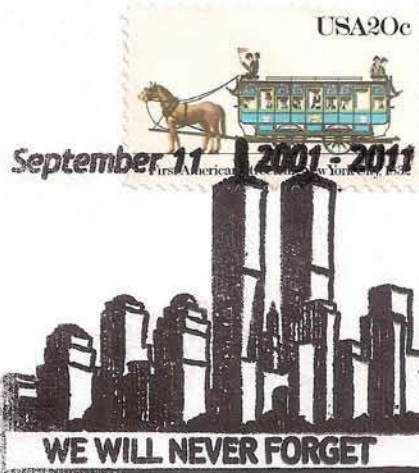


Wisconsin
USA 20c



9-10-11

**10 YEAR ANNIVERSARY
911 FIRE TRIBUTE STATION
RACINE, WI 53406**



Two tenth
anniversary
postmarks.

DALE SPEIRS
PO BOX 6830 STN D
CALGARY ALBERTA
T2P 2E7

4.9 - MEMORIALS

Beginning October 1, 2001, Yoko Ono sponsored a billboard against the terrorists in New York City, quoting a lyric from John Lennon's song "Imagine".



"Imagine all the people living life in peace."

FREE
CARD

maxracks.com



(212) 575.2800

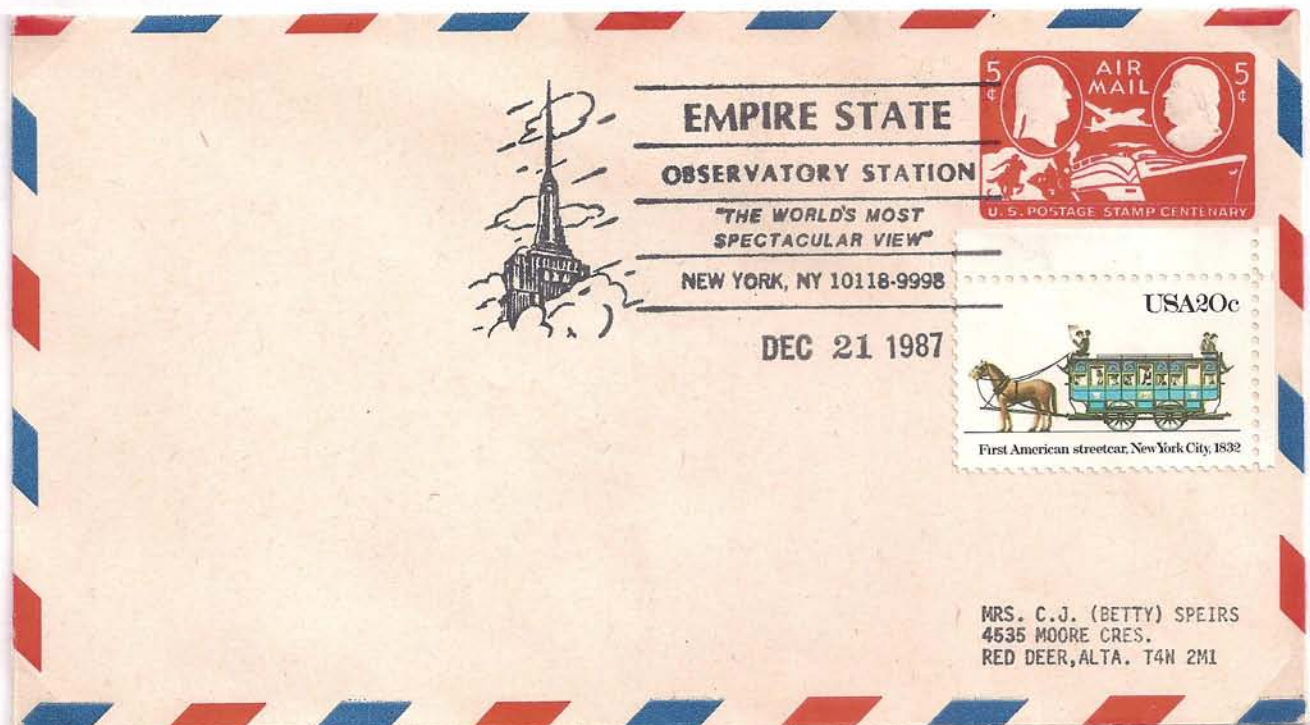
NYC Billboard event by YOKO ONO
October 1, 2001 - May 31, 2002

Lyrics from Imagine by John Lennon ©1971
Photo: Robert Young
©YOKO ONO 2002

MADE IN THE
USA

5.1 - LEGACIES

After the fall of the Twin Towers, the Empire State Building recovered its title as the tallest building in New York City. It lost it again when a single new tower called One World Trade Centre was completed in 2014 on the WTC site.



5.2 - LEGACIES

Some of the steel salvaged from the wreckage of the Twin Towers was melted down and used to fabricate part of the hull of the USS New York.

Christening Today



USS NEW YORK
LPD-21

Remembering 9-11

DECATUR CHAPTER NO. 4 U.S.C.S.



USA FIRST CLASS FOREVER

USS NEW YORK LPD-21

'NEVER FORGET'

Commissioning
USS NEW YORK
LPD-21

San Antonio Class
Amphibious Warfare Ship
Built By Northrup-Grumman
Ship Systems



'NEVER FORGET'

Commissioning Day

Purple Heart
The Medal for the
Combat Wounded



Purple
Heart

USA
44

